

EN

For more information and to set up,  
go to [www.xampion.com/support](http://www.xampion.com/support)

FI

Ohjeita käyttöönottoon sivuilla  
[www.xampion.com/support](http://www.xampion.com/support)

SE

För mer information och för att ställa in,  
gå till [www.xampion.com/support](http://www.xampion.com/support)

DE

Weitere Informationen und Einstellungen  
finden Sie unter [www.xampion.com/support](http://www.xampion.com/support)

FR

Pour plus d'informations et configuration  
rendez-vous sur [www.xampion.com/support](http://www.xampion.com/support)

I

Per ulteriori informazioni e per configurazione  
vai sul sito [www.xampion.com/support](http://www.xampion.com/support)

ES

Para más información y configuración,  
vaya a [www.xampion.com/support](http://www.xampion.com/support)

NL

Voor meer informatie en om in te stellen  
[www.xampion.com/support](http://www.xampion.com/support)

# QUICK START GUIDE



**XAMPION**

FOOTBALL

## Contact us:

[sales@xampion.com](mailto:sales@xampion.com)  
[www.xampion.com](http://www.xampion.com)

TRAIN SMARTER. PLAY BETTER.



**XAMPION**  
FOOTBALL

[XAMPION.COM/SUPPORT](http://XAMPION.COM/SUPPORT)

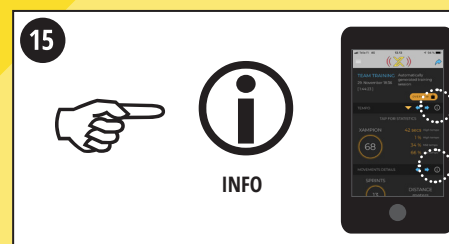
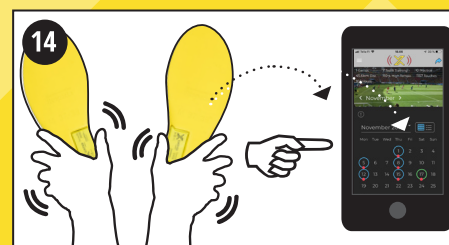
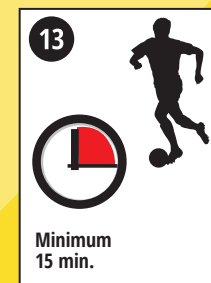
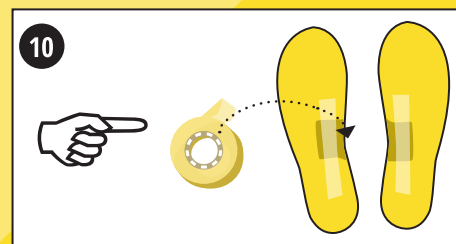
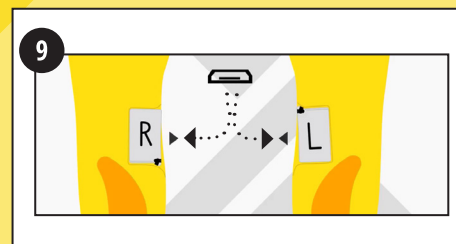
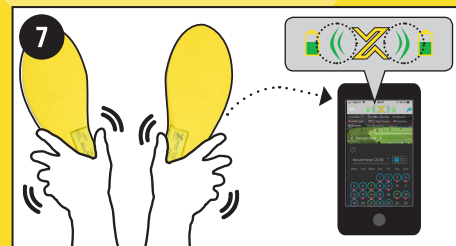
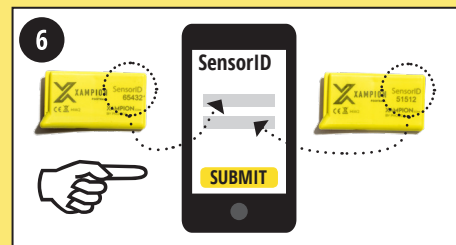
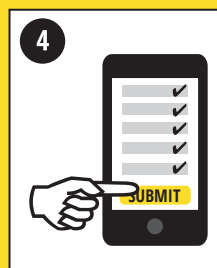
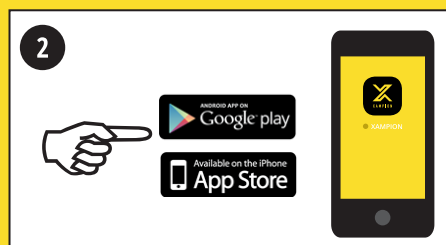
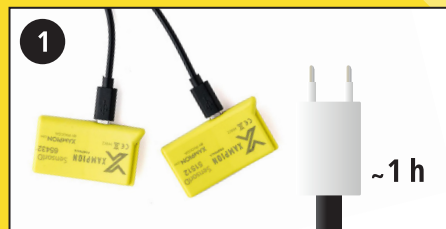


**XAMPION**  
FOOTBALL

[XAMPION.COM/SUPPORT](http://XAMPION.COM/SUPPORT)

# Xampion® System Setup

1 – 11 ARE REQUIRED FOR SYSTEM SETUP



## REQUIREMENTS

Xampion® App and Xampion Sensors are compatible with smartphones & tablets with the following specifications for mobile operating systems and connectivity:

- iOS 9 and newer
- Android 5.0 and newer
- BLE 4.0 and newer (Bluetooth)

## PRODUCT INFORMATION – XAMPION® SENSORS

- Highly durable, shock-proof and water resistant casing
- Use temperature range: -10° C – +55° C
- Sensor powers up automatically from motion, turns off when still
- Weight: 9 grams
- Dimensions: 4–6,5 mm x 27 mm x 47 mm
- Built-in 100 mAh battery with 15–20 hours active battery life
- Built-in memory for storing at least 20 hours of active football data
- Bluetooth connectivity
- MicroUSB port for charging

## CARING

Xampion® sensors have durable and water-resistant casing. After use, remove insole and sensors from the shoes to dry. Keep the sensors and their built-in Micro USB port clean and free of dirt to avoid cable connectivity problems. It is safe to rinse the sensors and the Micro USB port under running water. Dry with cloth after rinsing and store in room temperature. Do not use any chemical for cleaning. Do not heat up the sensor.

## DISCLAIMER

Progda Oy / Ltd and Xampion® disclaims any and all liabilities related to third parties' products and services.

## WARNING

Contains small parts which may be a choking hazard. Not suitable for children under age 3.

## CAUTION

Do not drop or allow the sensors to be immersed in water or other liquid. Symbol indicates that the item shall not be treated as household waste. Instead, it shall be handed over to the applicable collection point for recycling of electrical and electronic equipment.

## SUPPORT

For more information about Xampion®, the latest version of the user guide, frequently asked questions, instructional videos and customer support visit [xampion.com/support](http://xampion.com/support).

Xampion® is a registered trademark of Progda Oy / Ltd, Finland

[XAMPION.COM/SUPPORT](http://XAMPION.COM/SUPPORT)

BLUETOOTH® BLE CONNECTIVITY



[XAMPION.COM/SUPPORT](http://XAMPION.COM/SUPPORT)